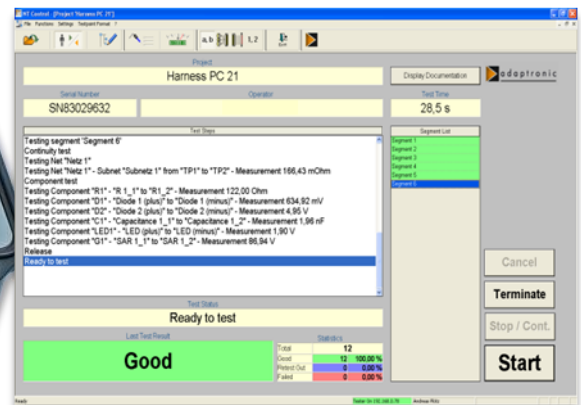




Image: NT 235 with options



NT 235

Mobile – flexible – solid

- Easy operation via PC with control software NT Control
- Comfortable test program editors
- Extensive display possibilities and tools for fault location in the unit under test
- Extensive result reporting to file, to printer or via database connection*
- Up to **512** test points
- Low voltage test up to **12 VDC / 400 mA**
- High voltage test up to **1000 VDC**
- Continuity test, short circuit test, insulation test and component test
- Remote maintenance

Especially optimized for mobile operation and stiff:

- Hard-top case: water proof, dust proof, unbreakable, floatable, low weight, acceptance: MIL-STD-810F, FED-STD-101C, ATA300
- Power supply 100 - 240 VAC or 21 - 28 VDC
- Selectable test point interfaces
- Separate cases for accessories available

* optional

TESTING

NT 235

Test program generation and testing with NT Control

With the user friendly software NT Control it is comfortable to generate, edit and to manage test programs as well, as to carry out tests. The data transfer between a PC with NT Control and a NT 235 takes place via network. NT Control is necessary for the operation of the NT 235 and part of the delivery. NT Control can be run on a PC* with the operating system Microsoft Windows® 7 Pro up to Windows® 10 Pro (country variants German or English).

Technical features NT 235	
Test points	max. 512
Low voltage test DC	
Test voltage	max. 12 V
Test current	max. 400 mA
Threshold continuity test	0.5 Ohm – 1 kOhm (optional four-wire measurement from 10 mOhm)
Threshold short-circuit test	20 kOhm – 1 MOhm
Component test	Resistors: 0.5 Ohm – 1 MOhm Capacitors: 10 nF – 10 mF Diodes, Zener diodes, LEDs, varistors (100V – 800 V, I = 1 mA), surge arrestors
High voltage test DC	
Test voltage	100 – 1000 V
Insulation test	100 kOhm – 1 GOhm
Breakdown test	Fast recognition of voltage breakdowns
General	
Power supply	100 – 240 VAC (50 – 60 Hz) or 21 – 28 VDC, switchable
Interfaces	2 x serial interface RS232 (internal) for control and printer Network / pin number probe Connector for temperature and humidity sensor
Dimensions (W x H x D, approx.)	487 x 229 x 386 mm (case closed)
Scope of delivery	NT 235, main cable, pin number probe, USB flash drive with NT Control and documentation in PDF format

* PC not in the scope of delivery